

Fiber Panel Portfolios

G2 Family

The G2 family of panels and modules is a versatile solution that is available in configurations for any application. No matter what polarity, fiber count or performance needed; the G2 family has a solution. Our G2 family modules fit into any AGL, HD or UD panels offering density up to 72f duplex LC or 48f MPO adding flexibility to any configuration.

The following high-level overview provides details of the AGL, HD and UD panels and associated modules and components.

G2 PANELS				
Series	Density	Concept	Material ID	Description
AGL - AGILE Simple & Cost Effective	96 LC/RU 32 MPO/RU	Open Rear Fixed	760241517	AGL-1U-FX
			760241518	AGL-1U-ANG-FX
		Open Rear Sliding	760242453	AGL-1U-SL
			760242454	AGL-1U-ANG-SL
		Basic 2-Piece Drawer	760242455	AGL-1U-DRW-SL
		Basic Enclosed Fixed	760242475	AGL-1U-ENC-FX
Basic Enclosed Sliding	760242476	AGL-1U-ENC-SL		
HD - High Density Premium Features	96 LC/RU 32 MPO/RU	Standard Fixed	760210732	HD-1U-FX
			760210740	HD-2U-FX
			760210757	HD-4U-FX
		Standard Sliding	760209940	HD-1U
			760209957	HD-2U
			760209965	HD-4U
		Standard w/Splicing	760231506	HD-1U-SP
			760231514	HD-2U-SP
			760231522	HD-4U-SP
UD - Ultra Density Premium Features	144 LC/RU 48 MPO/RU	Premium Sliding	760227306	UD-2U
			760227314	UD-4U

AGL, HD and UD Panels

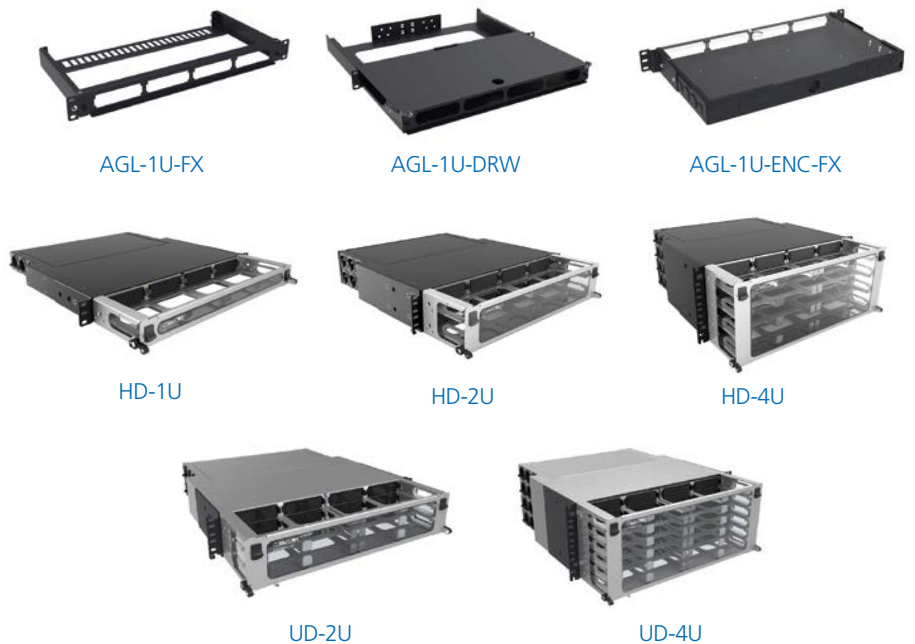
The AGL, HD and UD fiber panels support the G2 style module and adapter panels, which are backwards compatible with previous hardware such as the InstaPATCH360 and 360G2 fiber panels.

The HD and UD panels also both support intelligence through the Automated Infrastructure Management (AIM) imVision solution. Please download the [imVision Solutions Guide](#) for more information.

The AGL panel is a low cost solution for usable density in a 1U format.

The HD (High Density) panel is available in 1U, 2U and 4U sizes, and supports high density applications in data centers and buildings.

The UD (Ultra Density) panel is designed for even higher density applications and is available in 2U and 4U sizes.



Fiber Panel Portfolios

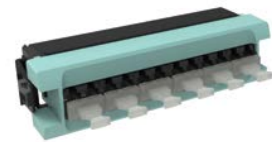
G2 Adapter Packs



360DPis-24LC-LS

G2 ADAPTER PACKS

	12 Fiber		24 Fiber	
	Material ID	Description	Material ID	Description
LC Multimode (OM3-OM4)	760230938	360DPis-12LC-LS	760216754	360DPis-24LC-LS
LC Multimode (OM5)	760236043	360DPis-12LC-WB	760236041	360DPis-24LC-WB
LC Singlemode	760230946	360DPis-12LC-SM	760216762	360DPis-24LC-SM
LC Singlemode APC	760230961	360DPis-12LCA-SM	760216770	360DPis-24LCA-SM
SC Multimode (OM3-OM4)	760134551	360DP-12SC-LS	X	X
SC Singlemode	760135087	360DP-12SC-SM	X	X
SC Singlemode APC	760135095	360DP-12SCA-SM	X	X



360DPiP-12LC-LS

G2 ADAPTER PACK IPATCH READY

	12 Fiber		24 Fiber	
	Material ID	Description	Material ID	Description
LC Multimode (OM3-OM4)	760242975	360DPiP-12LC-LS	760242979	360DPiP-24LC-LS
LC Multimode (OM5)	760242977	360DPiP-12LC-WB	760242981	360DPiP-24LC-WB
LC Singlemode	760242976	360DPiP-12LC-SM	760242980	360DPiP-24LC-SM
LC Singlemode APC	760242978	360DPiP-12LCA-SM	760242982	360DPiP-24LCA-SM



360DP-2MPO



360DP-4MPO



360DP-6MPO



360DP-8MPO

G2 MPO ADAPTER PACKS

	Material ID	Description
2 MPO	760107490	360DP-2MPO
4 MPO	760107508	360DP-4MPO
6 MPO	760107516	360DP-6MPO
8 MPO	760107524	360DP-8MPO

Fiber Panel Portfolios

G2 Modules



DM12-24LC-WB-ULL

G2 ULL modules support higher speeds over longer distances allowing you to meet the loss budgets of today's ultra low-loss links and can be used for the CommScope Application Assurance Guarantee. G2 ULL modules are factory tested to .35 dB IL multimode and 0.60 dB singlemode.

G2 MODULES - ULTRA LOW LOSS SOLUTIONS METHOD B ENHANCED

	MPO 8 - 24 Fiber		MPO 12 - 12 Fiber		MPO 12 - 24 Fiber		MPO 24 - 24 Fiber	
	Material ID	Description	Material ID	Description	Material ID	Description	Material ID	Description
LC Multimode (OM3-OM4)	760236108	DM08-24LC-LS-ULL	760238838	DM12-12LC-LS-ULL	760236110	DM12-24LC-LS-ULL	760236112	DM24-24LC-LS-ULL
LC Multimode (OM5)	760236109	DM08-24LC-WB-ULL	760238839	DM12-12LC-WB-ULL	760236111	DM12-24LC-WB-ULL	760236113	DM24-24LC-WB-ULL
LC Singlemode UPC	760238082	DM08-24LC-SM-ULL	760238837	DM12-12LC-SM-ULL	760238083	DM12-24LC-SM-ULL	X	X



DM08iP-24LC-LS-ULL

G2 MODULES - ULTRA LOW LOSS SOLUTIONS METHOD B ENHANCED imVision

	MPO 8 - 24 Fiber		MPO 12 - 12 Fiber		MPO 12 - 24 Fiber		MPO 24 - 24 Fiber	
	Material ID	Description	Material ID	Description	Material ID	Description	Material ID	Description
LC Multimode (OM3-OM4)	760236116	DM08iP-24LC-LS-ULL	760243043	DM12iP-12LC-LS-ULL	760236118	DM12iP-24LC-LS-ULL	760236120	DM24iP-24LC-LS-ULL
LC Multimode (OM5)	760236117	DM08iP-24LC-WB-ULL	760243044	DM12iP-12LC-SM-ULL	760236119	DM12iP-24LC-WB-ULL	760236121	DM24iP-24LC-WB-ULL
LC Singlemode	760238084	DM08iP-24LC-SM-ULL	760243045	DM12iP-12LC-WB-ULL	760238085	DM12iP-24LC-SM-ULL	760246311	DM24iP-24LC-SM-ULL

Fiber Panel Portfolios

G2 Modules



360DMiP-12LC-WB

G2 MODULES - LOW LOSS SOLUTIONS METHOD B

MPO12 - 12 Fiber			MPO12 - 24 Fiber	
	Material ID	Description	Material ID	Description
LC Multimode (OM3-OM4)	760242967	360DMiP-12LC-LS	760242971	360DMiP-24LC-LS
LC Multimode (OM5)	760242969	360DMiP-12LC-WB	760242973	360DMiP-24LC-WB
LC Singlemode	760242968	360DMiP-12LC-SM	760242972	360DMiP-24LC-SM
LC Singlemode APC	760242970	360DMiP-12LCA-SM	760242974	360DMiP-24LCA-SM



360DMis-12LC-LS



360DMis-12LC-SM



360DMis-12LCA-SM



360DMis-24LC-LS

G2 MODULES - LOW LOSS SOLUTIONS METHOD B

MPO12 - 12 Fiber			MPO12 - 24 Fiber	
	Material ID	Description	Material ID	Description
LC Multimode (OM3-OM4)	760224071	360DMis-12LC-LS	760206532	360DMis-24LC-LS, AQUA
LC Multimode (OM5)	760224113	360DMis-12LC-LS-WB	760217950	360DMis-24LC-WB
LC Singlemode UPC	760224089	360DMis-12LC-SM	760206540	360DMis-24LC-SM BLUE
LC Singlemode APC	760224238	360DMis-12LCA-SM	760206565	360DMis-24LCA-SM
SC Multimode (OM3-OM4)	760109967	360DM-12SC-LS	X	X
SC Singlemode UPC	760109975	360DM-12SC-SM	X	X
SC Singlemode APC	760109991	360DM-12SCA-SM	X	X

Fiber Panel Portfolios

G2 Modules

G2 conversion modules are available in low-loss, 0.50 dB MM/1.34 dB SM IL and ultra low-loss 0.40 dB MM/0.70 dB SM IL performance.



360CM12-2x3-LS

G2 CONVERSION MODULES				
Low Loss Method B			Ultra Low Loss Method B Enhanced	
	Material ID	Description	Material ID	Description
MPO12 (2) / MPO8 (3)	760200345	360CM12-2x3-LS	760237217	CM12-2X3-LS-ULL
MPO12 (4) / MPO8 (6)	760200352	360CM12-4x6-LS	760237220	CM12-4X6-LS-ULL
MPO12 (2) / MPO8 (3) Singlemode	760220400	360CM12-2x3-TS	760237216	CM12-2X3-SM-ULL
MPO12 (4) / MPO8 (6) Singlemode	760220418	360CM12-4x6-TS	760237219	CM12-4X6-SM-ULL
MPO12 (2) / MPO8 (3) OM5	X	X	760237218	CM12-2X3-WB-ULL
MPO12 (4) / MPO8 (6) OM5	X	X	760237221	CM12-4X6-WB-ULL



G2-SP-24LCG-PT



G2-SP-24LCV-PT

G2 SPLICE CASSETTES				
Stranded			Ribbon	
	Material ID	Description	Material ID	Description
LC Multimode (OM4)	760244927	G2-SP-24LCX-PT	760244928	G2-SP-24LCX-RPT
	760245399	G2-SP-12LCX-PT	760245400	G2-SP-12LCX-RPT
LC Multimode (OM5)	760245398	G2-SP-24LCV-PT	N/A	N/A
	760245403	G2-SP-12LCV-PT	N/A	N/A
LC UPC Singlemode	760244929	G2-SP-24LCG-PT	760244930	G2-SP-24LCG-RPT
	760245401	G2-SP-12LCG-PT	760245402	G2-SP-12LCG-RPT
LC APC Singlemode	760245961	G2-SP-24LAG-PT	N/A	N/A
	760245960	G2-SP-12LAG-PT	N/A	N/A
Empty Cassette No Fiber	760245494	G2-SP-24LC	N/A	N/A
	760245495	G2-SP-12LC	N/A	N/A
	760245497	G2-SP-0000	N/A	N/A

Fiber Panel Portfolios

G2 Pigtail Cassettes



360G2 Cartridge 12-LC-LS-AQ



360G2 Cartridge 12-LCA-SM-GR



360G2 Cartridge 12-LC-SM-BL

G2 PIGTAIL CASSETTES				
	No Pigtails		Pigtails Included	
	Material ID	Description	Material ID	Description
LC Multimode (OM3-OM4)	760109256	360G2 Cartridge 12-LC-LS-AQ	760109470	360G2 Cartridge 12-LC-LS-AQ-Pigtails
LC Singlemode UPC	760109272	360G2 Cartridge 12-LC-SM-BL	760109496	360G2 Cartridge 12-LC-SM-BL-Pigtails
LC Singlemode APC	760109280	360G2 Cartridge 12-LCA-SM-GR	760109504	360G2 Cartridge 12-LCA-SM-GR-Pigtails
SC Multimode (OM3-OM4)	760109298	360G2 Cartridge 6-SC-LS-AQ	760109512	360G2 Cartridge 6-SC-LS-AQ-Pigtails A
	X	X	760109520	360G2 Cartridge 6-SC-LS-AQ-Pigtails B
SC Singlemode UPC	760109314	360G2 Cartridge 6-SC-SM-BL	760109553	360G2 Cartridge 6-SC-SM-BL-Pigtails A
	X	X	760109561	360G2 Cartridge 6-SC-SM-BL-Pigtails B
SC Singlemode APC	760109322	360G2 Cartridge 6-SCA-SM-GR	760109579	360G2 Cartridge 6-SCA-SM-GR-Pigtails A
	X	X	760109587	360G2 Cartridge 6-SCA-SM-GR-Pigtails B

Fiber Panel Portfolios

G2 Wall Boxes & G2 Accessories

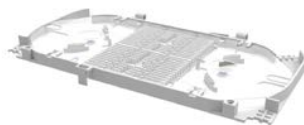


WB2-EMT-BK-8P-MOD

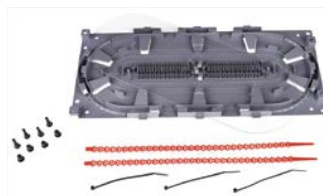
Wall Mount Building Enclosures provide fiber distribution management when space is at a premium. The WB2-MOD's are compatible with all G2 modules and, G2 splice cassettes and adapter packs.

G2 WALLBOXES

Density	Material ID	Description
24 LC	760248900	WB2-EMT-BK-1P-MOD
48 LC	760248901	WB2-EMT-BK-2P-MOD
96 LC	760248902	WB2-EMT-BK-4P-MOD
192 LC	760248903	WB2-EMT-BK-8P-MOD



AGL-SPLICE-48



360 LP-STACK-SPT



AGL-1U-TROUGH

G2 ACCESSORIES

Material ID	Product Code	Description
AGILE Panel Accessories		
760241378	AGL-SPLICE-48	AGILE Splice Tray Kit
760193938	AGL-1U-TROUGH	AGILE panel 1U Jumper Management Trough
Panel Accessories		
760039867	RS-2AF-16SF	RoloSplice Kit with 2 fusion splice trays for 1U and 2U rack mount, 2 and 4 port wall mount
760031856	RS-4AF-16SF	RoloSplice Kit with 4 fusion splice trays for 1U and 2U rack mount, 2 and 4 port wall mount
760031054	SW-6AF-16SF	Fusion Splice Wallet Kit with 6 splice trays for 4U rack mount and 8 port wall mount.
760148502	360-LP-STACK-SPT	Fusion Splice Tray Kit, stackable, large format for 1U and 2U rack mount
Miscellaneous		
760207944	HD-1U-REAR-EXT	1U Rear cable extension
760239082	SD-HD-UD-UDS2U-DOOR-LOCK-KT	Door lock kit for SD, HD, UD and UDS2U panels, including one (1) lock and one (1) key
760209619	CABLE-MOUNT-KIT-12	Cable attachment molding x 12
760058677	RMB-6-1/2	InstaPATCH Plus attachment bracket, rack mounted, six 1/2" fittings
760058685	RMB-6-3/8	InstaPATCH Plus attachment bracket, rack mounted, six 3/8" fittings
760109462	360G2-MOD-BLANK-4PK	Mod Panel Blank Adapter Pack, 4 Panels
760039875	G2-SRF	Small Diameter Cable Entrance Kit
760039883	G2-23BRKT	Mounting Bracket
760185595	KIT, FIBER DRUM	Fiber Drum Kit (2 per kit)
760238380	BK-FP-SML	Ribbon splice cassette blocking kit for HD-1U, HD-2U and UD-2U
760238381	BK-FP-LRG	Ribbon splice cassette blocking kit for HD-4U and UD-4U

Fiber Panel Portfolios

EHD Fiber Solutions

EHD fiber solutions are designed for today's more crowded and demanding environments. Available in 1U, 2U or 4U configurations, they support 72 duplex LC ports or 72 MPO ports per RU. EHD modules, adapter packs and cassettes are 24 fiber solutions.



EHD-1U



EHD-2U



EHD-4U

EHD PANELS

Density	Material ID	Description
144 LC	EHD-1U	EHD-1U
288 LC	EHD-2U	EHD-2U
576 LC	EHD-4U	EHD-4U



EHD-DP-12LC-WB

EHD LC ADAPTER PACKS

24 Fiber		
	Material ID	Description
LC Multimode (OM3-OM4)	760238903	EHD-DP-12LC-LS
LC Multimode (OM5)	760238902	EHD-DP-12LC-WB
LC Singlemode UPC	760238904	EHD-DP-12LC-SM



EHD-DP-12MPO-ALL-A

EHD MPO ADAPTER PACKS

	Material ID	Description
MPO 12 Method A	760235621	EHD-DP-12MPO-ALL-A
MPO 12 Method B	760235622	EHD-DP-12MPO-ALL-B

Fiber Panel Portfolios

EHD Fiber Solutions

EHD ULL modules support higher speeds over longer distances allowing you to meet the loss budgets of today's ultra low-loss links and can be used for the CommScope Application Assurance Guarantee. EHD ULL modules are factory tested to 0.35 dB IL multimode and 0.60 dB singlemode.



EHD08-DM-24LC-LS-B-ULL EHD08-DM-24LC-WB-B-ULL

EHD LC-MPO MODULES - 24 FIBER						
MPO 8 Method B Enhanced			MPO 12 Method B Enhanced		MPO 24 Method B Enhanced	
	Material ID	Description	Material ID	Description	Material ID	Description
LC Multimode (OM3-OM4)	760237958	EHD08-DM-24LC-LS-B-ULL	760237993	EHD12-DM-24LC-LS-B-ULL	760237999	EHD24-DM-24LC-LS-B-ULL
LC Multimode (OM5)	760237959	EHD08-DM-24LC-WB-B-ULL	760237994	EHD12-DM-24LC-WB-B-ULL	760238000	EHD24-DM-24LC-WB-B-ULL
LC Singlemode UPC	760237957	EHD08-DM-24LC-SM-B-ULL	760237992	EHD12-DM-24LC-SM-B-ULL	X	X
LC Singlemode APC	X	X	760239368	EHD12-DM-24LA-SM-B-LL	X	X

The EHD solution uses modular splice cassettes for integrated splicing and patching applications.



EHD-SP-24LC-LS-AS-ULL EHD-SP-24LC-SM-AS-ULL

EHD SPLICE CASSETTES - 24 FIBER				
Stranded			Ribbon	
	Material ID	Description	Material ID	Description
LC Multimode (OM3-OM4)	760237943	EHD-SP-24LC-LS-AS-ULL	760237941	EHD-SP-24LC-LSR-AS-ULL
LC Singlemode	760237944	EHD-SP-24LC-SM-AS-ULL	760237942	EHD-SP-24LC-SMR-AS-ULL

Fiber Panel Portfolios

CHD Fiber Solutions

CHD fiber solutions have the same densities as EHD, supporting 72 duplex LC ports or 72 MPO ports per RU. CHD offers more flexibility with 12 fiber modules, adapter packs and cassettes.



CHD-1U



CHD-2U



CHD-4U

CHD PANELS

Density	Material ID	Description
144 LC	CHD-1U	CHD-1U
288 LC	CHD-2U	CHD-2U
576 LC	CHD-4U	CHD-4U



CHD-DP-6MPO-ALL-A



CHD-DP-12LC-WB

CHD LC ADAPTER PACKS

12Fiber		
	Material ID	Description
LC Multimode OM4	760245730	CHD-DP-12LC-LS
LC Multimode OM5	760245729	CHD-DP-12LC-WB
LC Singlemode UPC	760243203	CHD-DP-12LC-SM

CHD MPO ADAPTER PACKS

	Material ID	Description
MPO 4 Method A	760243199	CHD-DP-4MPO-ALL-A
MPO 4 Method B	760243200	CHD-DP-4MPO-ALL-B
MPO 6 Method A	760243197	CHD-DP-6MPO-ALL-A
MPO 6 Method B	760243198	CHD-DP-6MPO-ALL-B

CHD ULL modules support higher speeds over longer distances allowing you to meet the loss budgets of today's ultra low-loss links and can be used for the CommScope Application Assurance Guarantee. CHD ULL modules are factory tested to 0.35 dB IL multimode and 0.60 dB singlemode.

CHD LC-MPO MODULES - 12 FIBER

MPO 12 Method B Enhanced		
	Material ID	Description
LC Multimode (OM3-OM4)	760245723	CHD12-DM-12LC-LS-B-ULL
LC Multimode (OM5)	760245728	CHD12-DM-12LC-WB-B-ULL
LC Singlemode UPC	760245724	CHD12-DM-12LC-SM-B-ULL

Fiber Panel Portfolios

CHD Fiber Solutions

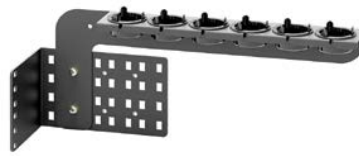


CHD-SP-12LC-SMR-B-ULL

CHD SPLICE CASSETTES - 12 FIBER				
	Stranded		Ribbon	
	Material ID	Description	Material ID	Description
LC Multimode (OM3-OM4)	760244973	CHD-SP-12LC-LS-B-ULL	760245733	CHD-SP-12LC-LSR-B-ULL
LC Singlemode UPC	760244824	CHD-SP-12LC-SM-B-ULL	760244826	CHD-SP-12LC-SMR-B-ULL
LC Singlemode APC	760245736	CHD-SP-12LA-SM-AS-LL	760245737	CHD-SP-12LA-SMR-AS-LL
Field Term Cassette - No Fiber	760244827	CHD-FT-00-LC-00	N/A	N/A



EHD-CMB



EHD-CMB-GAB



BK-FP-SML



BK-FP-LRG

EHD AND CHD ACCESSORIES		
Material ID	Product Code	Description
EHD-CMB	EHD-CMB	EHD and CHD external cable management cabinet mounting bracket
EHD-CMB-GAB	EHD-CMB-GAB	EHD and CHD external cable management cabinet mounting bracket for trunk gland adapters
760238380	BK-FP-SML	Ribbon splice cassette blocking kit for EHD-1U, EHD-2U and CHD-1U
760238381	BK-FP-LRG	Ribbon splice cassette blocking kit for EHD-4U
760245038	CHD-BK-2U	Ribbon splice cassette blocking kit for CHD-2U and CHD-4U (x2 needed for 4U)

Fiber Panel Portfolios Specialty Solutions



The pre-terminated EHD panel has LC connectors at the panel and stub on the far end. It allows customers to meet demands for increasing bandwidth and more connections in a timely, cost-effective manner while reducing optical loss. Installers simply reel out cable from the stub end and splice to large fiber count Outside Plant or Backbone cables.

EHD PRE-TERMINATED PANELS

Density	Concept	Material ID	Description
144 LC	Premium Sliding	HCC0-1ADDL0AxxxM	1RU Pre-terminated Patch Panel with LC Adapter and 144f I/O, Riser/LSZH cable, right cable entry, singlemode
144 LC	Premium Sliding	HCD0-1ADDL0AxxxM	1RU Pre-terminated Patch Panel with LC Adapter and 144f I/O, Riser/LSZH cable, left cable entry, singlemode
288 LC	Premium Sliding	HCC0-2BDDL0AxxxM	2RU Pre-terminated Patch Panel with LC Adapter and 288f I/O, Riser/LSZH cable, right cable entry, singlemode
288 LC	Premium Sliding	HCD0-2BDDL0AxxxM	2RU Pre-terminated Patch Panel with LC Adapter and 288f I/O, Riser/LSZH cable, left cable entry, singlemode

xxx - Denotes cable length in meters (lengths from 25m, and in 25m increments thereafter to 400m)
Other configurations are available. Contact your CommScope representative for more details.

The ultra-density splice family of splicing panels features a modular, ultra-dense design that scales effortlessly while holding maintenance costs and space requirements to a minimum. Perfect for areas like meeting rooms and interconnects.



UDS-2U-BK-LA-A

UDS -ULTRA DENSITY SPLICING

Low Loss			Ultra Low Loss		
Density	Material ID	Description	Density	Material ID	Description
288 LC APC Method A	760239066	UDS-2U-BK-LA-A	288 LC UPC Method A	760239074	UDS-2U-BK-LC-A-ULL
288 LC APC Method B Enhanced	760239068	UDS-2U-BK-LA-B	288 LC UPC Method B Enhanced	760239076	UDS-2U-BK-LC-B-ULL
864 LC APC Method A	760239070	UDS-6U-BK-LA-A	864 LC UPC Method A	760239078	UDS-6U-BK-LC-A-ULL
864 LC APC Method B Enhanced	760239072	UDS-6U-BK-LA-B	864 LC UPC Method B Enhanced	760239080	UDS-6U-BK-LC-B-ULL

CommScope's Rapid Fiber panel offers unmatched savings in installation time, labor costs and performance. Rapid Fiber panels utilize CommScope's unique RapidReel fiber cable spools, which means the cable is always the right length. The Rapid Fiber panel's combination of cable, RapidReel spooling and connector technology in a single panel not only relieves cable congestion but also simplifies the ordering and inventory of equipment.



RCPB-4KBPUE06100-B

RAPID FIBER PANELS

Material ID	Description
RCPB-1K2PUE03100-B	1RU 24f Rapid Panel with LC/UPC to MPO, Plenum, singlemode, 31m, Method B Enhanced
RCPB-1K2PUE06100-B	1RU 24f Rapid Panel with LC/UPC to MPO, Plenum, singlemode, 61m, Method B Enhanced
RCPB-1K2PUE12200-B	1RU 24f Rapid Panel with LC/UPC to MPO, Plenum, singlemode, 122m, Method B Enhanced
RCPB-4KBPUE03100-B	4RU 288f Rapid Panel with LC/UPC to MPO, Plenum, singlemode, 31m, Method B Enhanced
RCPB-4KBPUE06100-B	4RU 288f Rapid Panel with LC/UPC to MPO, Plenum, singlemode, 61m, Method B Enhanced
RCPB-4KBPUE12200-B	4RU 288f Rapid Panel with LC/UPC to MPO, Plenum, singlemode, 122m, Method B Enhanced