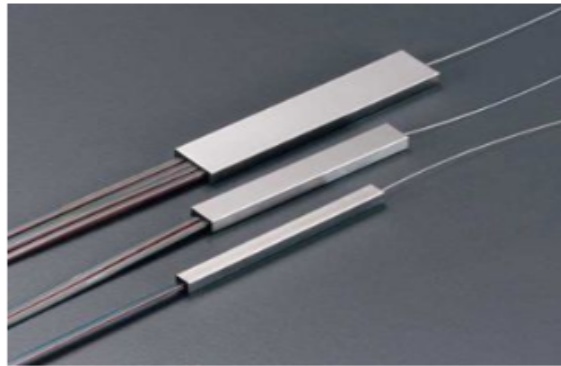


Bare Fiber PLC Splitter

Product categories: PLC Splitter

Product display: Indoor Optical Fiber Cable, FTTx Optical Fiber Cable, Outdoor Optical Fiber Cable, Armored Optical Fiber Cable, Optical Fiber Patchcord, Optical Fiber Pigtail and Accessory, PLC Splitter



Features: Small size, compact package, Low insertion loss, Low PDL, High return loss, Excellent channel uniformity, Telcordia GR-1209 and GR-1221 Compliance

Application : FTTx networks, PON networks, LAN networks, CATV Systems

Specifications:

Parameter		Unit		1×2	1×4	1×8	1×16	1×32	1×64
Fiber Type		/		G.657A, or customized					
Operating Wavelength		nm		1260~1650					
Insertion Loss	P	Max	dB	4.0	7.0	10.4	13.5	16.8	20.5
	S	Max	dB	4.2	7.3	10.6	13.8	17.1	20.8
PDL		Max	dB	0.2	0.3	0.3	0.3	0.3	0.5
Loss Uniformity		Max	dB	0.6	0.8	1.0	1.4	1.6	2.0
Return Loss		Min	dB	55(P Grade)/50(S Grade)					
Directivity		Min	dB	55					
Operating Temperature		°C		-40 ~ +85					
Storage Temperature		°C		-40 ~ +85					
Dimension(L×W×H)			mm	40×4×4			50×7×4		60×12×4

Remark: The above parameters do not include connectors; If connectors are added, the insertion loss will increase 0.2dB each.

Parameter		Unit		2×2	2×4	2×8	2×16	2×32	2×64
Fiber Type		/		G.657A, or customized					
Operating Wavelength		nm		1260~1650					
Insertion Loss	P	Max	dB	4.0	7.3	10.6	13.9	17.2	20.8
	S	Max	dB	4.2	7.5	11.0	14.5	17.5	21.0
PDL		Max	dB	0.2	0.3	0.3	0.3	0.3	0.5
Loss Uniformity		Max	dB	0.8	1.0	1.2	1.5	1.8	2.0
Return Loss		Min	dB	55(P Grade)/50(S Grade)					
Directivity		Min	dB	55					
Operating Temperature		°C		-40 ~ +85					
Storage Temperature		°C		-40 ~ +85					
Dimension(L×W×H)			mm	40×4×4			50×7×4		60×12×4

Caran N4-117 y Pasaje "D" Aguirre Terán (Calderón) Quito – Ecuador
www.jastech.com.ec



Min PLC Splitter

Product categories: PLC Splitter

Product display: Indoor Optical Fiber Cable, FTTx Optical Fiber Cable, Outdoor Optical Fiber Cable, Armored Optical Fiber Cable, Optical Fiber Patchcord, Optical Fiber Pigtail and Accessory, PLC Splitter



Features: Small size, compact package, Low insertion loss, Low PDL, High return loss, Excellent channel uniformity, Telcordia GR-1209 and GR-1221 Compliance

Application : FTTX networks, PON networks, LAN networks, CATV Systems

Parameter		Unit		1×2	1×4	1×8	1×16	1×32	1×64	
Fiber type		/		G.657A, or customized						
Operating Wavelength		nm		1260~1650						
Insertion Loss	P	Max	dB	4.0	7.0	10.4	13.5	16.8	20.5	
	S	Max	dB	4.2	7.3	10.6	13.8	17.1	20.8	
PDL		Max	dB	0.2	0.3	0.3	0.3	0.3	0.5	
Loss Uniformity		Max	dB	0.6	0.8	1.0	1.4	1.6	2.0	
Return Loss		Min	dB	55(P Grade)/50(S Grade)						
Directivity		Min	dB	55						
Operating Temperature		°C		-40 ~ +85						
Storage Temperature		°C		-40 ~ +85						
Dimension(L×W×H)			mm	60×7×4		60×12×4		80×20×6		100×40×6

Remark: The above parameters do not include connectors; If connectors are added, the insertion loss will increase 0.2dB each◦

Parameter		Unit		2×2	2×4	2×8	2×16	2×32	2×64	
Fiber type		/		G.657A, or customized						
Operating Wavelength		nm		1260~1650						
Insertion Loss	P	Max	dB	4.0	7.3	10.6	13.9	17.2	20.8	
	S	Max	dB	4.2	7.5	11.0	14.5	17.5	21.0	
PDL		Max	dB	0.2	0.3	0.3	0.3	0.3	0.5	
Loss Uniformity		Max	dB	0.8	1.0	1.2	1.5	1.8	2.0	
Return Loss		Min	dB	55(P Grade)/50(S Grade)						
Directivity		Min	dB	55						
Operating Temperature		°C		-40 ~ +85						
Storage Temperature		°C		-40 ~ +85						
Dimension(L×W×H)			mm	60×7×4		60×12×4		80×20×6		100×40×6

ABS Box PLC Splitter

Product categories: PLC Splitter

Product display: Indoor Optical Fiber Cable, FTTx Optical Fiber Cable, Outdoor Optical Fiber Cable, Armored Optical Fiber Cable, Optical Fiber Patchcord, Optical Fiber Pigtail and Accessory, PLC Splitter



Features: Small size, compact package, Low insertion loss, Low PDL, High return loss, Excellent channel uniformity, Telcordia GR-1209 and GR-1221 Compliance

Application : FTTX networks, PON networks, LAN networks, CATV Systems

Parameter		Unit		1×2	1×4	1×8	1×16	1×32	1×64
Fiber Type		/		G.657A, or customized					
Operating Wavelength		nm		1260~1650					
Insertion Loss	P	Max	dB	4.0	7.0	10.4	13.5	16.8	20.5
	S	Max	dB	4.2	7.3	10.6	13.8	17.1	20.8
PDL		Max	dB	0.2	0.3	0.3	0.3	0.3	0.5
Loss Uniformity		Max	dB	0.6	0.8	1.0	1.4	1.6	2.0
Return Loss		Min	dB	55(P Grade)/50(S Grade)					
Directivity		Min	dB	55					
Operating Temperature		°C		-40 ~ +85					
Storage Temperature		°C		-40 ~ +85					
Dimension(L×W×H)			mm	100×80×10			120×80×18		141×115×18

Remark: The above parameters do not include connectors: If connectors are added, the insertion loss will increase 0.2dB each.

Parameter		Unit		2×2	2×4	2×8	2×16	2×32	2×64
Fiber Type		/		G.657A, or customized					
Operating Wavelength		nm		1260~1650					
Insertion Loss	P	Max	dB	4.0	7.3	10.6	13.9	17.2	20.8
	S	Max	dB	4.2	7.5	11.0	14.5	17.5	21.0
PDL		Max	dB	0.2	0.3	0.3	0.3	0.3	0.5
Loss Uniformity		Max	dB	0.8	1.0	1.2	1.5	1.8	2.0
Return Loss		Min	dB	55(P Grade)/50(S Grade)					
Directivity		Min	dB	55					
Operating Temperature		°C		-40 ~ +85					
Storage Temperature		°C		-40 ~ +85					
Dimension(L×W×H)			mm	100×80×10			120×80×18		141×115×18

Caran N4-117 y Pasaje "D" Aguirre Terán (Calderón) Quito – Ecuador
www.jastech.com.ec





LGX PLC Splitter

Product categories: PLC Splitter

Product display: Indoor Optical Fiber Cable, FTTx Optical Fiber Cable, Outdoor Optical Fiber Cable, Armored Optical Fiber Cable, Optical Fiber Patchcord, Optical Fiber Pigtail and Accessory, PLC Splitter



Features: Small size, compact package, Low insertion loss, Low PDL, High return loss, Excellent channel uniformity, Telcordia GR-1209 and GR-1221 Compliance

Application : FTTX networks, PON networks, LAN networks, CATV Systems

Specifications:

Parameter				Unit	1×2	1×4	1×8	1×16	1×32	1×64	
Fiber Type				/	G.657A, or customized						
Operating Wavelength				nm	1280~1650						
Insertion Loss	P	Max	dB	4.0	7.0	10.4	13.5	16.8	20.5		
	S	Max	dB	4.2	7.3	10.6	13.8	17.1	20.8		
PDL				Max	dB	0.2	0.3	0.3	0.3	0.5	
Loss Uniformity				Max	dB	0.6	0.8	1.0	1.4	1.6	2.0
Return Loss				Min	dB	55(P Grade)/50(S Grade)					
Directivity				Min	dB	55					
Operating Temperature				°C	-40 ~ +85						
Storage Temperature				°C	-40 ~ +85						
Dimension(L×W×H)				mm	130×100×25		130×100×50		130×100×102		130×100×206
Remark: The above parameters do not include connectors; If connectors are added, the insertion loss will increase 0.2dB each.											

Parameter				Unit	2×2	2×4	2×8	2×16	2×32	2×64	
Fiber Type				/	G.657A, or customized						
Operating Wavelength				nm	1280~1650						
Insertion Loss	P	Max	dB	4.0	7.3	10.6	13.9	17.2	20.8		
	S	Max	dB	4.2	7.5	11.0	14.5	17.5	21.0		
PDL				Max	dB	0.2	0.3	0.3	0.3	0.5	
Loss Uniformity				Max	dB	0.8	1.0	1.2	1.5	1.8	2.0
Return Loss				Min	dB	55(P Grade)/50(S Grade)					
Directivity				Min	dB	55					
Operating Temperature				°C	-40 ~ +85						
Storage Temperature				°C	-40 ~ +85						
Dimension(L×W×H)				mm	130×100×25		130×100×50		130×100×102		130×100×206

Rack Mount PLC Splitter

Product categories: PLC Splitter

Product display: Indoor Optical Fiber Cable, FTTx Optical Fiber Cable, Outdoor Optical Fiber Cable, Armored Optical Fiber Cable, Optical Fiber Patchcord, Optical Fiber Pigtail and Accessory, PLC Splitter



Features: Small size, compact package, Low insertion loss, Low PDL, High return loss, Excellent channel uniformity, Telcordia GR-1209 and GR-1221 Compliance

Application : FTTX networks, PON networks, LAN networks, CATV Systems

Specifications

Parameter			Unit	1×2	1×4	1×8	1×16	1×32	1×64	
Fiber Type			/	G.657A, or customized						
Operating Wavelength			nm	1260~1650						
Insertion Loss	P	Max	dB	4.0	7.0	10.4	13.5	16.8	20.5	
	S	Max	dB	4.2	7.3	10.6	13.8	17.1	20.8	
PDL			Max	dB	0.2	0.3	0.3	0.3	0.5	
Loss Uniformity			Max	dB	0.8	0.8	1.0	1.4	1.6	2.0
Return Loss			Min	dB	55(P Grade)/50(S Grade)					
Directivity			Min	dB	55					
Operating Temperature			°C	-40 ~ +85						
Storage Temperature			°C	-40 ~ +85						
Dimension(L×W×H)			mm	482×200×45				482×200×89		
Remark: The above parameters do not include connectors; If connectors are added, the insertion loss will increase 0.2dB each.										

Parameter			Unit	2×2	2×4	2×8	2×16	2×32	2×64	
Fiber Type			/	G.657A, or customized						
Operating Wavelength			nm	1260~1650						
Insertion Loss	P	Max	dB	4.0	7.3	10.6	13.9	17.2	20.8	
	S	Max	dB	4.2	7.5	11.0	14.5	17.5	21.0	
PDL			Max	dB	0.2	0.3	0.3	0.3	0.5	
Loss Uniformity			Max	dB	0.8	1.0	1.2	1.5	1.8	2.0
Return Loss			Min	dB	55(P Grade)/50(S Grade)					
Directivity			Min	dB	55					
Operating Temperature			°C	-40 ~ +85						
Storage Temperature			°C	-40 ~ +85						
Dimension(L×W×H)			mm	482×200×45				482×200×89		
Remark: The above parameters do not include connectors; If connectors are added, the insertion loss will increase 0.2dB each.										



Tray Assembly PLC Splitter

Product categories: PLC Splitter

Product display: Indoor Optical Fiber Cable, FTTx Optical Fiber Cable, Outdoor Optical Fiber Cable, Armored Optical Fiber Cable, Optical Fiber Patchcord, Optical Fiber Pigtail and Accessory, PLC Splitter



Features: Small size, compact package, Low insertion loss, Low PDL, High return loss, Excellent channel uniformity, Telcordia GR-1209 and GR-1221 Compliance

Application: FTTH networks, PON networks, LAN networks, CATV Systems

Specifications

Parameter	>Unit		>1×2	>1×4	>1×8	>1×16	>1×32	>1×64	
Fiber type	>/		>G.657A, or customized						
Operating Wavelength	>nm		>1260~1650						
Insertion Loss	P	>Max >dB	>4.0	>7.0	>10.4	>13.5	>16.8	>20.5	
	S	>Max >dB	>4.2	>7.3	>10.6	>13.8	>17.1	>20.8	
PDL	>Max	>dB	>0.2	>0.3	>0.3	>0.3	>0.3	>0.5	
Loss Uniformity	>Max	>dB	>0.6	>0.8	>1.0	>1.4	>1.6	>2.0	
Return Loss	>Min	>dB	>55(P Grade)/50(S Grade)						
Directivity	>Min	>dB	>55						
Operating Temperature	>°C		>-40 ~ +85						
Storage Temperature	>°C		>-40 ~ +85						
Dimension(L×W×H)	>mm		>345×195×25				>345×195×50		
Remark: The above parameters do not include connectors; If connectors are added, the insertion loss will increase 0.2dB each.									

Parameter	>Unit		>2×2	>2×4	>2×8	>2×16	>2×32	>2×64	
Fiber type	>/		>G.657A, or customized						
Operating Wavelength	>nm		>1260~1650						
Insertion Loss	P	>Max >dB	>4.0	>7.3	>10.6	>13.9	>17.2	>20.8	
	S	>Max >dB	>4.2	>7.5	>11.0	>14.5	>17.5	>21.0	
PDL	>Max	>dB	>0.2	>0.3	>0.3	>0.3	>0.3	>0.5	
Loss Uniformity	>Max	>dB	>0.8	>1.0	>1.2	>1.5	>1.8	>2.0	
Return Loss	>Min	>dB	>55(P Grade)/50(S Grade)						
Directivity	>Min	>dB	>55						
Operating Temperature	>°C		>-40 ~ +85						
Storage Temperature	>°C		>-40 ~ +85						
Dimension(L×W×H)	>mm		>345×195×25				>345×195×50		
Remark: The above parameters do not include connectors; If connectors are added, the insertion loss will increase 0.2dB each.									

FBT Fiber Coupler

Product categories: PLC Splitter

Product display: Indoor Optical Fiber Cable, FTTx Optical Fiber Cable, Outdoor Optical Fiber Cable, Armored Optical Fiber Cable, Optical Fiber Patchcord, Optical Fiber Pigtail and Accessory, PLC Splitter



Features: Small size, compact package, Low insertion loss, Low PDL, High return loss, Excellent channel uniformity, Telcordia GR-1209 and GR-1221 Compliance

Application: FTTX networks, PON networks, LAN networks, CATV Systems

Specifications

Parameter	Unit	Wide Band Coupler		Dual Window Coupler		Multimode fiber Coupler	
Grade	/	P	S	P	S	P	S
Operating Wavelength	nm	1310,1550or C+Band		1310and1550		850or1310 or customer specified	
Operating Bandwidth	nm	±40		±40		±40	
Typical Excess Loss	dB	≤0.07	≤0.01	≤0.07	≤0.01	≤0.4	≤0.7
Insertion Loss	50/50	≤3.4	≤3.6	≤3.4	≤3.6	≤3.7	≤4.0
	40/60	≤4.2/2.6	≤4.7/2.8	≤4.2/2.6	≤4.7/2.8	≤4.7/2.7	≤5.0/3.0
	30/70	≤5.7/1.9	≤6.0/2.0	≤5.7/1.9	≤6.0/2.0	≤6.0/2.0	≤6.3/2.4
	20/80	≤7.6/1.25	≤8.0/1.3	≤7.6/1.25	≤8.0/1.3	≤7.8/1.4	≤8.1/1.7
	10/90	≤9.55~10.65/0.65	≤9.3~10.9/0.8	≤9.55~10.65/0.65	≤9.3~10.9/0.8	≤11.2/0.9	≤11.6/1.2
	5/95	≤12.4~13.8/0.4	≤12.1~14.1/0.5	≤12.4~13.8/0.4	≤12.1~14.1/0.5	≤14.5/0.7	≤15.0/1.0
	3/97	≤14.5~16.15/0.3	≤14.15~16.5/0.4	≤14.5~16.15/0.3	≤14.15~16.5/0.4	≤14.5~16.15/0.3	≤14.15~16.5/0.4
	2/98	≤16.1~18.05/0.25	≤15.7~18.45/0.35	≤16.1~18.05/0.25	≤15.7~18.45/0.35	≤18.6/0.6	≤19.4/0.9
1/99	19.05~21.15±0.2	≤18.55~21.65/0.3	19.05~21.15±0.2	≤18.55~21.65/0.3	≤22.0/0.5	≤22.8/0.8	
PDL	dB	≤0.1	≤0.15	≤0.15	≤0.2	≤0.1	≤0.15
Directivity	dB	≥55					
Operating Temperature	°C	-40 ~ +85					
Storage Temperature	°C	-40 ~ +85					

1. The above parameters do not include connectors;
2. If connectors are added, the insertion loss will increase 0.2dB each

Package Information

Configuration	1×2 or 2×2		
Fiber length	1.5m , other on request		
Fiber Type	250µm bare fiber	900µm loose tube	900µm loose tube, 2mm Cable, 3mm Cable
Dimensions(φ×L)	Φ3.0×54mm	Φ3.0×54mm	90×14×8.5mm
	Φ3.0×45mm		



Optical Distribution Box

Product categories:ODN

Product display:Indoor Optical Fiber Cable,FTTx Optical Fiber Cable,Outdoor Optical Fiber Cable,Armored Optical Fiber Cable,Optical Fiber Patchcord,Optical Fiber Pigtail and Accessory,PLC Splitter



Feature:

Divided splicing and distribution structure, easy to operation,Small volume, nice outlook, large distribution space,Stable environment performance and resistance damage,Applicable to install PLC splitters

Application:

FTTH, CATV

Local area networks

Data communication networks

Wall mounted for indoor and outdoor application

Product Characteristics:

Working temperature (°C)	-25~+55
Storage temperature (°C)	-40~+65
Humidity	≤85% (+40°C)
Atmosphere Pressure	70kPa-106kPa

Caran N4-117 y Pasaje "D" Aguirre Terán (Calderón) Quito – Ecuador
www.jastech.com.ec



Fiber Outlet

Product categories:ODN

Product display:Indoor Optical Fiber Cable,FTTx Optical Fiber Cable,Outdoor Optical Fiber Cable,Armored Optical Fiber Cable,Optical Fiber Patchcord,Optical Fiber Pigtail and Accessory,PLC Splitter



Product Detail:

- 1, Material: PVC
- 2, Connector: SC/UPC
- 3, packed with 2 set of screws

Technical Spec.

Material	ABS Flame resistant material
Body and panel Process	Injection
Size	86*86*25MM
Weight	47g
Applicable	FTTH
Port	2



Optical Fiber Closure

Product categories:ODN

Product display:Indoor Optical Fiber Cable,FTTx Optical Fiber Cable,Outdoor Optical Fiber Cable,Armored Optical Fiber Cable,Optical Fiber Patchcord,Optical Fiber Pigtail and Accessory,PLC Splitter



Feature:

Large splice tray

Suit for ribbon and bundle cable

No special tools needed, easy to install and open

Meet different capacity requirements by flexible configuration of splice tray

Multi-entry hole to realize straight-through, branching, and splicing

Application:

Aerial

Underground

Wall-mounting

Duct or Pipe-Mounting

Handhole-mounting

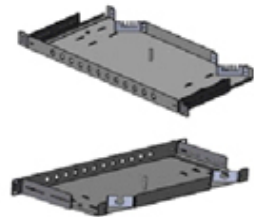
Product Characteristics:

Installation		Aerial, Underground, Duct
Color		Black
Working temperature (°C)		-40~+65
Storage temperature (°C)		-45~+65
Capacity (fiber Count)	Buchy	4-144
	Ribbon	24-288

Fiber PatchPanel

Product categories:ODN

Product display:Indoor Optical Fiber Cable,FTTx Optical Fiber Cable,Outdoor Optical Fiber Cable,Armored Optical Fiber Cable,Optical Fiber Patchcord,Optical Fiber Pigtail and Accessory,PLC Splitter



Technical specifications:

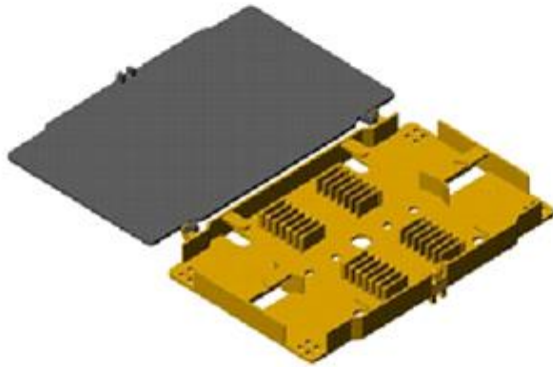
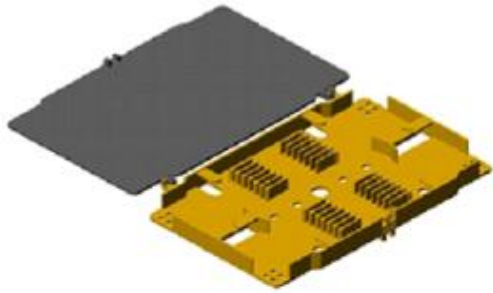
- Patch panel shall be designed for deployment of 12-48 type optical SC connectors.
- As an fibre optic distribution box, it shall be designed for 19" assembly frame.
- Capacity - 12 SC to 48 SC type optical connector.
- Patch panel shall include SC pigtails and all other necessary elements in it.
- it shall have enough spare space for putting optic cable.
- Possibility of inserting optical cable from the back.
- shall include all necessary elements for fibres splicing (SC pigtail, splice organizer, splice protector, SC adapter ,...)
- 1U height (12-48 core) and 2U height (72-96 core) and 3U height for 144 core

	1*12	1*24	1*48	1*72	1*96	1*144
material	high-quality cold-rolled					
thickness	1.0mm					
Dimension	Width:19 inch High:1U		Width:19 inch High:2U		Width:19 inch High:3U	
Main components	Splice Tray, Pigtail, Adapter, Fiber clips					
Pigtail type	SC/UPC					
Type of connectors	SC/UPC					

Fiber Splice Tray

Product categories:ODN

Product display:Indoor Optical Fiber Cable,FTTx Optical Fiber Cable,Outdoor Optical Fiber Cable,Armored Optical Fiber Cable,Optical Fiber Patchcord,Optical Fiber Pigtail and Accessory,PLC Splitter



Product Detail:

- 1, Panel material and thickness:ABS,1.5MM
- 2, Panel technology: Injection molding
- 3, External Dimension: 165*105*14mm
- 4, Fiber Count: 12F

Technical Spec.

Item	Technical Specification
Insert Loss	$\leq 0.5\text{dB}$
Return Loss	FC/PC $\geq 40\text{ dB}$ FC/UPC $\geq 50\text{dB}$ FC/APC $\geq 60\text{ dB}$
Insulation resistance	$\geq 3\text{KV}(\text{DC})/1\text{Min.}$, no breakdown, no arc.
Anti Voltage Strength	$\geq 3000\text{V}(\text{DC})/1\text{min.}$, no breakdown, no arc.
Flame Resistance	GB/T 5169.7-1985 (ABS)
Life Span	≥ 1000 time



SC Optical Fiber Patchcord

Product categories: Optical Fiber Patchcord

Product display: Indoor Optical Fiber Cable, FTTx Optical Fiber Cable, Outdoor Optical Fiber Cable, Armored Optical Fiber Cable, Optical Fiber Patchcord, Optical Fiber Pigtail and Accessory, PLC Splitter



Features:

Low insertion loss, high return loss, Good repeatability and interchange ability, Simplex and duplex for option, UPC and APC type a available

Applications: LAN, WAN, and access system Fiber CATV and fiber network system

Specifications:

Parameter	Unit	Index			
		PC(SM)	UPC(SM)	APC(SM)	PC(MM)
Connector Type	/	PC(SM)	UPC(SM)	APC(SM)	PC(MM)
Return Loss	dB	≥45	≥50	≥60	≥35
Insertion Loss	dB	Typ≤0.2 Max≤0.3			
Repeatability	dB	≤0.1			
Interchangeability	dB	≤0.2			
Connection Durability	times	≥1000			
Operating Temperature	°C	-25~+70			

Fiber Type

Fiber Type	SM9/125, MM50/125, MM62.5/125, OM3, OM4
------------	---

Chromatogram



LC Optical Fiber Patchcord

Product categories: Optical Fiber Patchcord

Product display: Indoor Optical Fiber Cable, FTTx Optical Fiber Cable, Outdoor Optical Fiber Cable, Armored Optical Fiber Cable, Optical Fiber Patchcord, Optical Fiber Pigtail and Accessory, PLC Splitter



Features:

Low insertion loss, high return loss, Good repeatability and interchange ability, Simplex and duplex for option, UPC and APC type available

Applications: LAN, WAN, and access system Fiber CATV and fiber network system

Specifications:

Parameter	Unit	Index			
		PC(SM)	UPC(SM)	APC(SM)	PC(MM)
Connector Type	/				
Return Loss	dB	≥45	≥50	≥60	≥35
Insertion Loss	dB	Typ≤0.2 Max≤0.3			
Repeatability	dB	≤0.1			
Interchangeability	dB	≤0.2			
Connection Durability	times	≥1000			
Operating Temperature	°C	-25~+70			

Fiber Type

Fiber Type	SM9/125, MM50/125, MM62.5/125, OM3, OM4
------------	---

Chromatogram





FC Optical Fiber Patchcord

Product categories: Optical Fiber Patchcord

Product display: Indoor Optical Fiber Cable, FTTx Optical Fiber Cable, Outdoor Optical Fiber Cable, Armored Optical Fiber Cable, Optical Fiber Patchcord, Optical Fiber Pigtail and Accessory, PLC Splitter



Features:

Low insertion loss, high return loss, Good repeatability and interchange ability, Simplex and duplex for option, UPC and APC type a available

Applications: LAN, WAN, and access system Fiber CATV and fiber network system

Specifications:

Parameter	Unit	Index			
		PC(SM)	UPC(SM)	APC(SM)	PC(MM)
Connector Type	/	PC(SM)	UPC(SM)	APC(SM)	PC(MM)
Return Loss	dB	≥45	≥50	≥60	≥35
Insertion Loss	dB	Typ≤0.2 Max≤0.3			
Repeatability	dB	≤0.1			
Interchangeability	dB	≤0.2			
Connection Durability	times	≥1000			
Operating Temperature	°C	-25~+70			

Fiber Type

Fiber Type	SM9/125, MM50/125, MM62.5/125, OM3, OM4
------------	---

Chromatogram



ST Optical Fiber Patchcord

Product categories: Optical Fiber Patchcord

Product display: Indoor Optical Fiber Cable, FTTx Optical Fiber Cable, Outdoor Optical Fiber Cable, Armored Optical Fiber Cable, Optical Fiber Patchcord, Optical Fiber Pigtail and Accessory, PLC Splitter



Features:

Low insertion loss, high return loss, Good repeatability and interchange ability, Simplex and duplex for option, UPC and APC type a available

Applications: LAN, WAN, and access system Fiber CATV and fiber network system

Specifications:

Parameter	Unit	Index			
		PC(SM)	UPC(SM)	APC(SM)	PC(MM)
Connector Type	/				
Return Loss	dB	≥45	≥50	≥60	≥35
Insertion Loss	dB	Typ≤0.2 Max≤0.3			
Repeatability	dB	≤0.1			
Interchangeability	dB	≤0.2			
Connection Durability	times	≥1000			
Operating Temperature	°C	-25~+70			

Fiber Type

Fiber Type	SM9/125, MM50/125, MM62.5/125, OM3, OM4
------------	---

Chromatogram





FTTH Drop Cable Patchcord

Product categories: Optical Fiber Patchcord

Product display: Indoor Optical Fiber Cable, FTTx Optical Fiber Cable, Outdoor Optical Fiber Cable, Armored Optical Fiber Cable, Optical Fiber Patchcord, Optical Fiber Pigtail and Accessory, PLC Splitter



Features: Low insertion loss, high return loss, Good Repeatability and interchange ability

Applications: Applied for FTTH project

Specifications:

Parameter	Unit	Index	
		APC(SM)	UPC(SM)
Connector Type	/	APC(SM)	UPC(SM)
Return Loss	dB	≥60	≥50
Insertion Loss	dB	≤0.2	
Repeatability	dB	≤0.2	
Interchangeability	dB	≤0.2	
Connection Durability	times	≥1000	
Operating Temperature	°C	-25~+70	

Fiber Type

Fiber Type	SM9/125,G657A
------------	---------------

Chromatogram





MPO MTP Optical Fiber Patchcord

Product categories: Optical Fiber Patchcord

Product display: Indoor Optical Fiber Cable, FTTx Optical Fiber Cable, Outdoor Optical Fiber Cable, Armored Optical Fiber Cable, Optical Fiber Patchcord, Optical Fiber Pigtail and Accessory, PLC Splitter



Features: Low insertion loss, high return loss, High precision guide pins for exact alignment

Applications: FTTB, PLC, 40G/100G SFP, SFP+

Specifications:

Parameter		Unit	SM Standard	SM Lowloss	MM Standard	MM Lowloss
Insertion Loss	Typ	dB	0.35	0.2	0.35	0.2
	Max		0.75	0.35	0.65	0.35
Return Loss		dB	APC \geq 50	/	\geq 25	\geq 35
			PC \geq 40			
Repeatability		dB	\leq 0.1			
Interchangeability		dB	\leq 0.3(Connector Randomly)			
Durability		dB	\leq 0.3(change 500matings)		\leq 0.3(change 1000 matings)	
Vibration		dB	\leq 0.3 (10~55Hz)			
Operating Temperature		$^{\circ}$ C	-25~+70			

Fiber Type

Fiber Type	SM9/125, MM50/125, MM62.5/125, OM3, OM4
------------	---

Chromatogram





PDLC Optical Fiber Patchcord

Product categories: Optical Fiber Patchcord

Product display: Indoor Optical Fiber Cable, FTTx Optical Fiber Cable, Outdoor Optical Fiber Cable, Armored Optical Fiber Cable, Optical Fiber Patchcord, Optical Fiber Pigtail and Accessory, PLC Splitter



Features: Safe and reliable connection, waterproof, dustproof Robust minicord-breakout or field cable

Applications: Fiber optic line between Remote-Radio Head and base station, FTTA, FTTH

Specifications:

Parameter	Unit	Index		
		SM 9/125	MM50/125	MM62.5/125
Cable Type	/	SM 9/125	MM50/125	MM62.5/125
Insertion Loss	dB	Max≤0.7		
Repeatability	dB	≤0.1		
Interchangeability	dB	≤0.2		
Connection Durability	times	≥500		
Operating Temperature	°C	-25~+70		

Fiber Type

Fiber Type	SM9/125, MM50/125, MM62.5/125, OM3, OM4
------------	---

Chromatogram

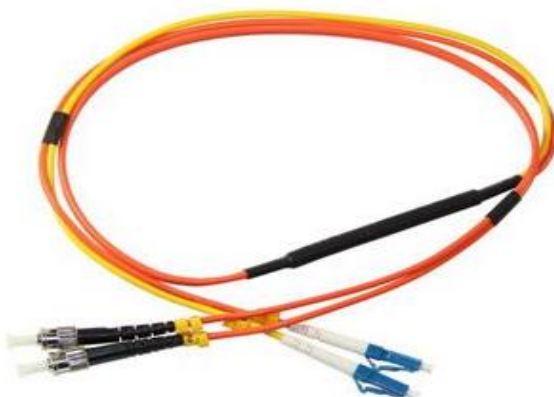




Mode Conditioning Patchcord

Product categories: Optical Fiber Patchcord

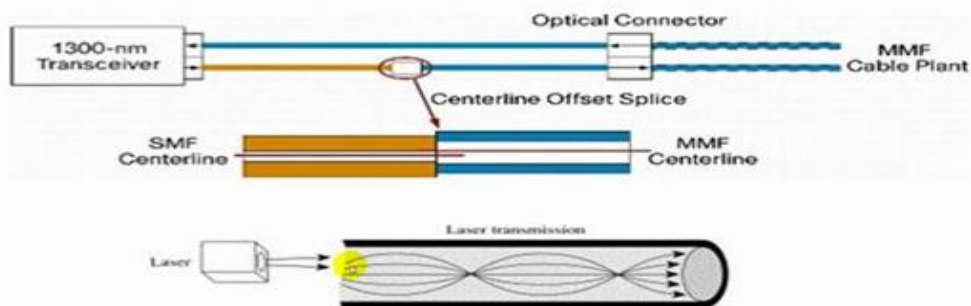
Product display: Indoor Optical Fiber Cable, FTTx Optical Fiber Cable, Outdoor Optical Fiber Cable, Armored Optical Fiber Cable, Optical Fiber Patchcord, Optical Fiber Pigtail and Accessory, PLC Splitter



Features: Low insertion loss, high return loss, Good repeatability and interchange ability

Applications: LAN, WAN, and access system Fiber CATV and fiber network system

The Solution = Cable Offset



Fiber Type

Fiber Type	SM9/125, MM50/125, MM62.5/125
------------	-------------------------------

Chromatogram





Optical Fiber Pigtail

Product categories: Optical Fiber Pigtail and Accessory

Product display: Indoor Optical Fiber Cable, FTTx Optical Fiber Cable, Outdoor Optical Fiber Cable, Armored Optical Fiber Cable, Optical Fiber Patchcord, Optical Fiber Pigtail and Accessory, PLC Splitter



Features: Low insertion loss, high return loss, Good Repeatability and interchange ability

Applications: LAN, WAN, and Access System Fiber CATV and fiber network System

Specifications:

Parameter	Unit	Index			
Connector Type	/	SC, LC, FC, ST			
	/	PC(SM)	UPC(SM)	APC(SM)	PC(MM)
Return Loss	dB	≥45	≥50	≥60	≥35
Insertion Loss	dB	Types ≤0.2 Max ≤0.3			
Repeatability	dB	≤0.1			
Interchangeability	dB	≤0.2			
Connection Durability	times	≥1000			
Operating Temperature	°C	-25~+70			

Fiber Type

Fiber Type	SM9/125, MM50/125, MM62.5/125, OM3, OM4
------------	---

Chromatogram

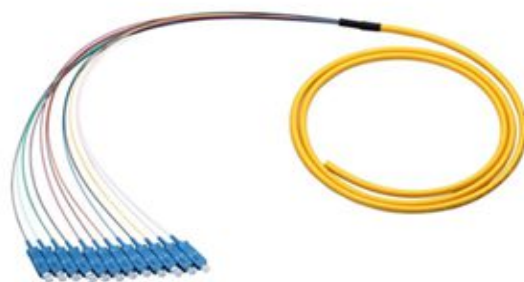




Bundle Optical Fiber Pigtail

Product categories: Optical Fiber Pigtail and Accessory

Product display: Indoor Optical Fiber Cable, FTTx Optical Fiber Cable, Outdoor Optical Fiber Cable, Armored Optical Fiber Cable, Optical Fiber Patchcord, Optical Fiber Pigtail and Accessory, PLC Splitter



Features: Low insertion loss, high return loss, Good Repeatability and interchange ability

Applications: LAN, WAN, and access system Fiber CATV and fiber network system

Specifications:

Parameter	Unit	Index			
Connector Type	/	SC, LC, FC, ST			
	/	PC(SM)	UPC(SM)	APC(SM)	PC(MM)
Return Loss	dB	≥45	≥50	≥60	≥35
Insertion Loss	dB	Type≤0.2 Max≤0.3			
Repeatability	dB	≤0.1			
Interchangeability	dB	≤0.2			
Connection Durability	times	≥1000			
Operating Temperature	°C	-25~+70			

Fiber Type

Fiber Type	SM9/125, MM50/125, MM62.5/125, OM3, OM4
------------	---

Chromatogram



Optical Fiber Adapter



Product categories: Optical Fiber Pigtail and Accessory

Product display: Indoor Optical Fiber Cable, FTTx Optical Fiber Cable, Outdoor Optical Fiber Cable, Armored Optical Fiber Cable, Optical Fiber Patchcord, Optical Fiber Pigtail and Accessory, PLC Splitter



Features: Low insertion loss, high return loss, Good Repeatability and interchange ability

Applications: LAN, WAN, and Access System Fiber CATV and fiber network System

Specifications:

Product Type	Inserted core face	Reduplication	Interchange	Operating Temperature	Insertion Loss	
					SM	MM
SC	UPC/APC	≤0.1dB	≤0.2dB	-25~+70°C	≤0.3dB	≤0.5dB
FC	UPC/APC	≤0.1dB	≤0.2dB	-25~+70°C	≤0.3dB	≤0.5dB
LC	UPC/APC	≤0.1dB	≤0.2dB	-25~+70°C	≤0.3dB	≤0.5dB
ST	UPC/APC	≤0.1dB	≤0.2dB	-25~+70°C	≤0.3dB	≤0.5dB
MT-RJ	UPC/APC	≤0.1dB	≤0.2dB	-25~+70°C	≤0.3dB	≤0.5dB

Fiber Type

Fiber Type	SM9/125, MM50/125, MM62.5/125, OM3, OM4
------------	---

Chromatogram



Optical Fiber Fast Connector

Product categories: Optical Fiber Pigtail and Accessory

Product display: Indoor Optical Fiber Cable, FTTx Optical Fiber Cable, Outdoor Optical Fiber Cable, Armored Optical Fiber Cable, Optical Fiber Patchcord, Optical Fiber Pigtail and Accessory, PLC Splitter



Features: Low insertion loss, high return loss, Good Repeatability and interchange ability

Applications: LAN, WAN, and Access System Fiber CATV and fiber network System

Specifications:

ITEM	Technical Parameters
Applicable for	Drop cable. Indoor cable
Optical fiber diameter	125 μ m (G.657A)
Tight buffer diameter	250 μ m
Fiber mode	Single mode
Operation time	About 100s (no fiber cut)
Insert loss	\leq 0.3dB (1310nm & 1550nm)
Return loss	\leq -50dB
Fastening strength of naked fiber	>5 N
Fastening strength of naked fiber holder	>10 N
Tensile strength	>50 N
Using temperature	-40 \sim +75 $^{\circ}$ C
On-line tensile strength (20 N)	Δ IL \leq 0.5dB Δ RL \leq 5dB
Mechanical durability (500 times)	Δ IL \leq 0.5dB Δ RL \leq 5dB
Drop-off test (drop-off height 4m, once per direction, totally 3 times)	Δ IL \leq 0.5dB Δ RL \leq 5dB